

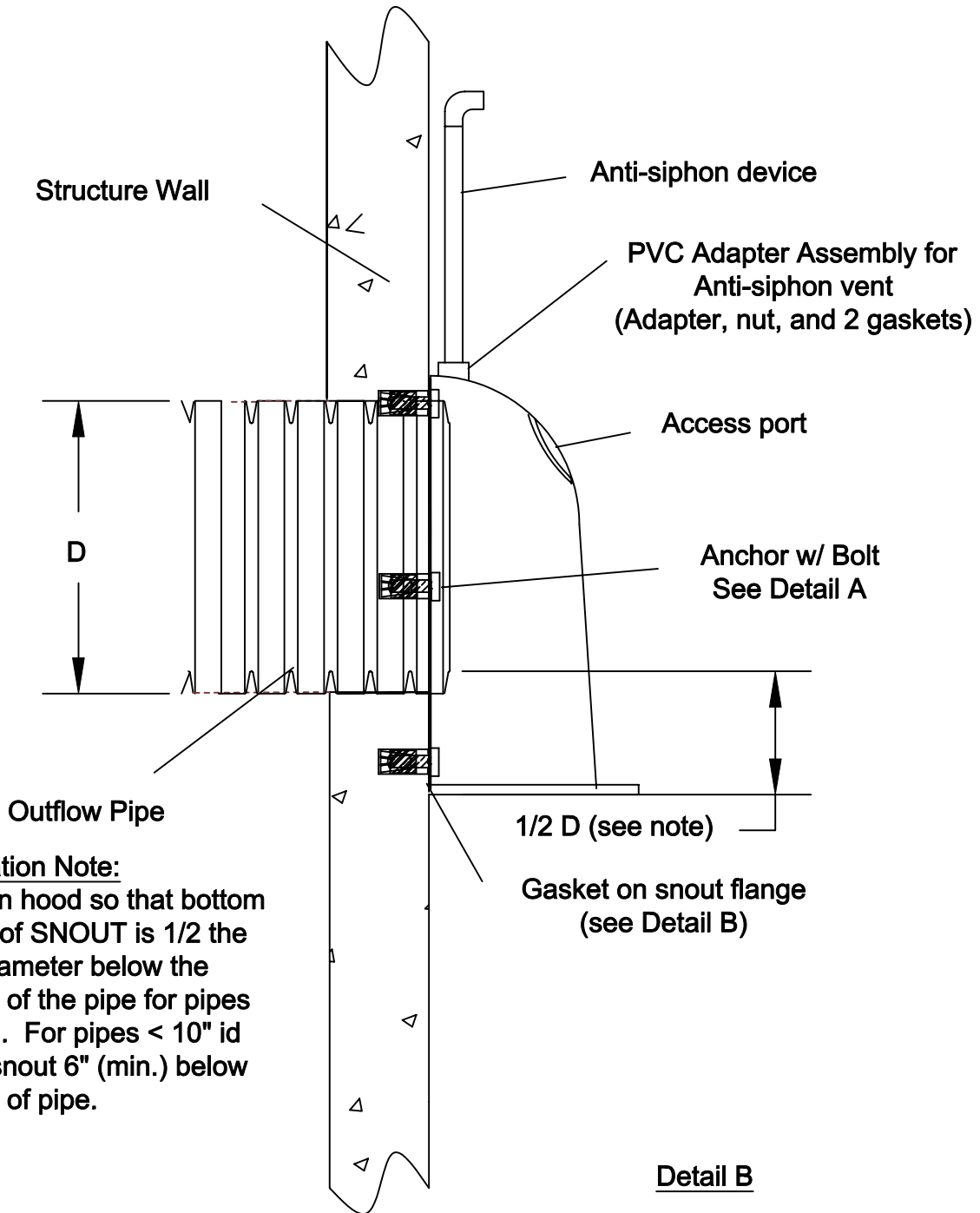
# BEST MANAGEMENT PRODUCTS, INC.

## SNOUT OIL & DEBRIS STOP

### DRAWING NUMBER: IN-SN

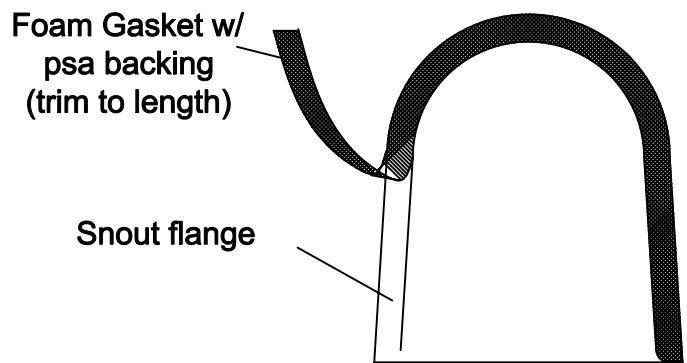
## INSTALLATION DIAGRAM (TYPICAL)

U.S.PATENT #6126817 ADDITIONAL PATENTS PENDING



**Installation Note:**  
 Position hood so that bottom flange of SNOUT is 1/2 the pipe diameter below the bottom of the pipe for pipes >12" id. For pipes < 10" id place snout 6" (min.) below bottom of pipe.

Detail B



Detail A

