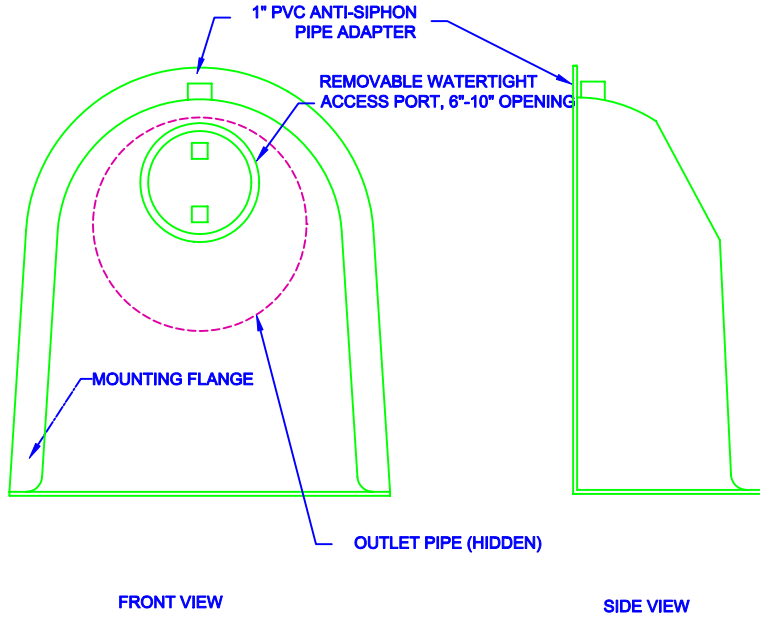


CONFIGURATION DETAIL

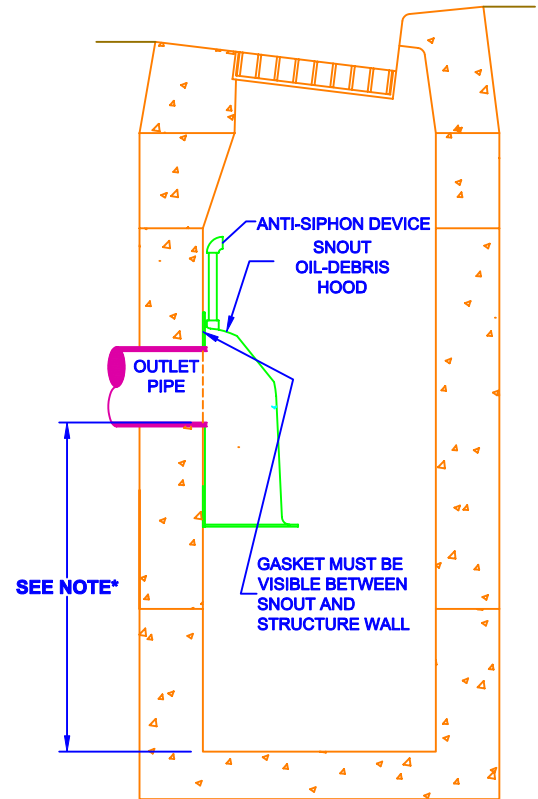


FRONT VIEW

SIDE VIEW

SNOUT OIL-WATER-DEBRIS SEPARATOR

TYPICAL INSTALLATION

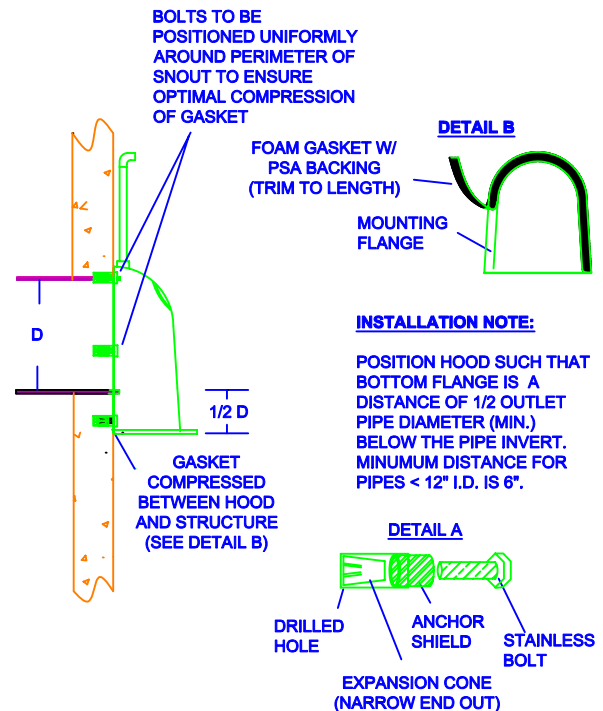


***NOTE- SUMP DEPTH TO BE MIN. OF 2.5 TIMES THE OUTLET PIPE I.D. (E.G. 24" PIPE= 5' SUMP) 3' MIN FOR PIPES 12" I.D. OR LESS**

INSPECTION REQUIREMENTS:

1. **MANUFACTURER:** ALL HOODS AND TRAPS FOR CATCH BASINS AND WATER QUALITY STRUCTURES SHALL BE PROVIDED BY: **BEST MANAGEMENT PRODUCTS, INC.**
53 MT. ARCHER RD.
LYME, CT 06371
TOLL FREE: (800) 504-8008 OR (877) 434-3197 WEB SITE: www.bmpinc.com
2. **CONFIGURATION:** ALL HOODS SHALL BE EQUIPPED WITH A WATERTIGHT ACCESS PORT, A MOUNTING FLANGE, AND AN ANTI-SIPHON VENT AS DRAWN. (SEE CONFIGURATION DETAIL)
3. **PIPE COVERAGE:** THE SIZE OF THE HOOD SHALL PERMIT THE O.D. OF THE OUTLET PIPE TO BE COVERED COMPLETELY.
4. **HOOD POSITION:** THE BOTTOM OF THE HOOD SHALL EXTEND DOWNWARD A MINIMUM DISTANCE EQUAL TO 1/2 THE OUTLET PIPE I.D. WITH A MINIMUM DISTANCE OF 6" FOR PIPES <12" I.D. GREATER INSERTION DEPTH IS PERMISSIBLE.
5. **ANTI-SIPHON VENT:** VENT WITH ELBOW AND FEMALE ADAPTER SHALL EXTEND ABOVE HOOD BY MINIMUM OF 3" AND A MAXIMUM OF 24" ACCORDING TO STRUCTURE CONFIGURATION.
6. **MOUNTING SURFACE PREPARATION:** THE SURFACE OF THE STRUCTURE WHERE THE HOOD IS MOUNTED SHALL BE FINISHED SMOOTH AND FREE OF LOOSE MATERIAL.
7. **SNOUT/STRUCTURE INTERFACE:** THE HOOD SHALL BE SECURELY ATTACHED TO STRUCTURE WALL WITH 3/8" STAINLESS STEEL BOLTS. OIL-RESISTANT GASKET AS SUPPLIED BY MANUFACTURER **MUST BE INSTALLED** TO PROVIDE PROPER SEAL. (SEE DETAIL "B")
8. **ACCESSORIES:** IF OIL BOOMS OR FLOW DEFLECTORS ARE SPECIFIED, THEY MUST BE INSTALLED AND PRESENT FOR INSPECTION.
9. **INSTALLATION INSTRUCTIONS:** INSTRUCTIONS SHALL BE FURNISHED UPON REQUEST OF INSPECTOR WITH MANUFACTURER SUPPLIED INSTALLATION KIT. INSTALLATION KIT SHALL INCLUDE:
 - A. INSTALLATION INSTRUCTIONS
 - B. PVC ANTI-SIPHON VENT PIPE, FEMALE ADAPTER WITH NUT, O-RING GASKETS
 - C. OIL-RESISTANT CRUSHED CELL FOAM GASKET WITH PSA BACKING
 - D. 3/8" STAINLESS STEEL BOLTS
 - E. ANCHOR SHIELDS
 (SEE BELOW FOR MULTI-PART SNOUTS 36F, 48F, 54R, 96F AND SPLIT SNOUTS ONLY)
 F. STAINLESS NUTS AND BOLTS PLUS GASKET TO SECURE TOP AND BOTTOM OF SNOUT.

INSTALLATION DETAIL



INSTALLATION REQUIREMENTS FOR SNOUT HOODS INSTALLED IN STORMWATER QUALITY IMPROVEMENT STRUCTURES

DESCRIPTION	DATE	SCALE
OIL- DEBRIS HOOD INSTALLATION REQUIREMENTS (TYPICAL)	04/13/05	NONE
	DRAWING NUMBER INRQ-SN	