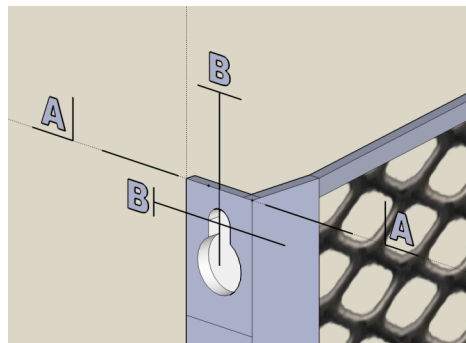
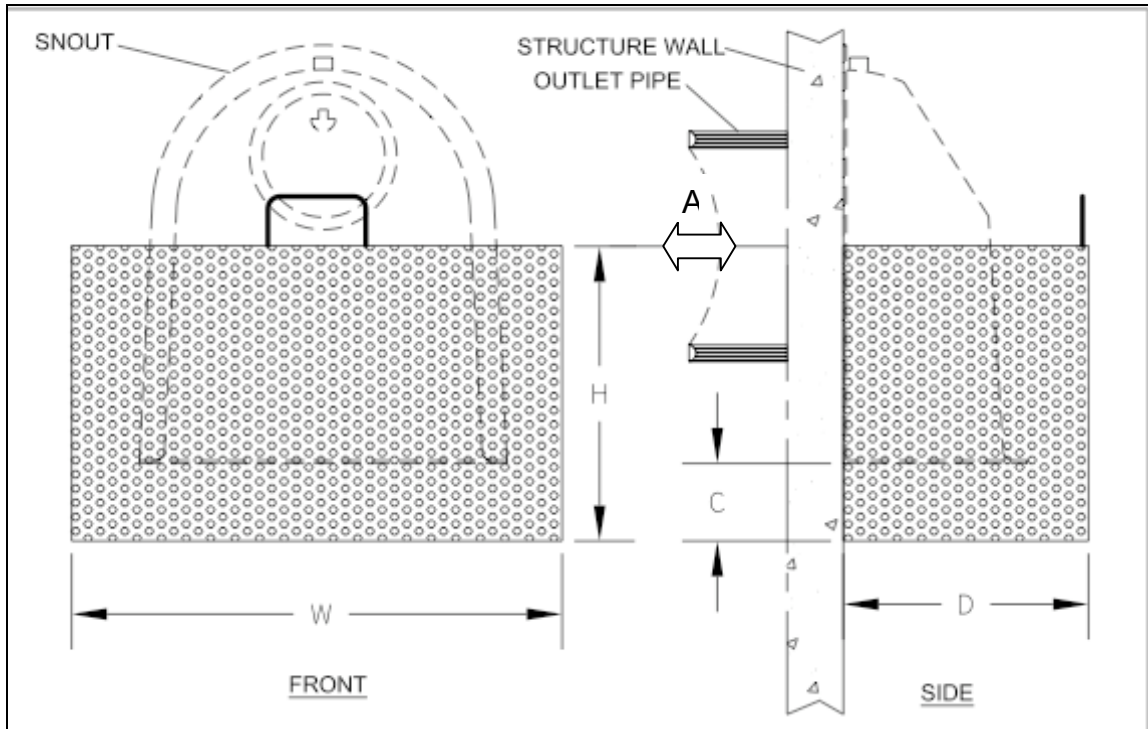


Best Management Products, Inc.

U.S. Patent #6126817 Canadian Patent # 2285146

Stainless TrashScreen™ INSTALLATION INSTRUCTIONS



TRASHSCREEN™ DIMENSIONS				
SNOUT® SIZE	H	W	D	C
18F	21"	28"	14"	5"
24F	27"	36"	18"	7"
30F	32"	46"	23"	8"
36FTB	45"	50"	25"	9"
48FTB	47"	68"	34"	11"
52RTB/72	80"	68"	50"	14"

H = Height

W = Width

D = Depth

C = CLEARANCE FROM SNOUT® TO SCREEN

1. Mark the horizontal centerline (“A” on drawing above) of the outlet pipe on both sides of the structure wall adjacent to the pipe to establish the placement of the top of the TrashScreen™.
2. Install SNOOUT® per BMP, Inc. installation instructions.
3. Select correct size TrashScreen™ for installed SNOOUT® (e.g. STS18F for 18F SNOOUT®).
4. Place the top of the TrashScreen™ at the horizontal centerline “A” of the outlet pipe, matching the marks made in step 1 and centered on the Snout.
5. Hold the screen on the structure wall, positioned as above, and mark the center points “B” at the top of each of the keyhole slot on the side flanges of the screen to indicate position of drill holes.
6. Drill structure wall and install the tamp-in lead anchors.
 - (1) Drill a 3/4" hole into the base material to the required depth (approximately 1-1/4" deep.)
 - (2) Blow the hole clean of dust and other material.
 - (3) Insert the anchor into the hole. Narrow end of cone must point out, lead shield slides over cone.
 - (4) Position the setting tool or a 9/16 socket against the anchor outer cone. (The outer rim of the tool or socket should seat onto the lead shield rim.) Set the anchor by driving the lead sleeve over the cone using several sharp hammer blows. Be sure the anchor is at the required embedment depth (flush or slightly below face of concrete).
 - (5) **Loosely install the 3/8" bolts leaving a gap of about 1/8" between the bolt head and wall. (Gap is necessary to slip the TrashScreen™ onto the bolts)**
7. Attach the TrashScreen™ to the structure wall by slipping the keyhole slots over the 3/8" diameter stainless steel bolts. **Do not tighten.** The screen should be able to be lifted off the bolts for service.

Installation Kit Items included with each TrashScreen™ :

The number of items and sizes will vary with size of screen, but will include 3/8" expansion anchor assemblies (anchors, stainless bolts & stainless washers)

MAINTENANCE

The structure housing the TrashScreen™ and SNOOUT should be emptied of debris and the accumulated solids as required by site conditions or at least once a year. BMP recommends scheduling maintenance when sump is half full, or six inches of floatable pollutants accumulate on the surface. The TrashScreen™ and SNOOUT® requires no real maintenance other than routine inspection and rinsing the trash off of the screen with a hose or pressure washer during the cleaning sequence of the catch basin and flushing the anti-siphon vent on the SNOOUT® with water or air to verify that it is clear.

TECHNICAL SUPPORT

For technical consultation or additional information, and for custom design and fabrication services, please contact : T.J. Mullen at (800) 504-8008 (tjm@bmpinc.com) or Lee Duran at (888) 434-0277 (duran@bmpinc.com)
Visit our web site at: <http://www.bmpinc.com>