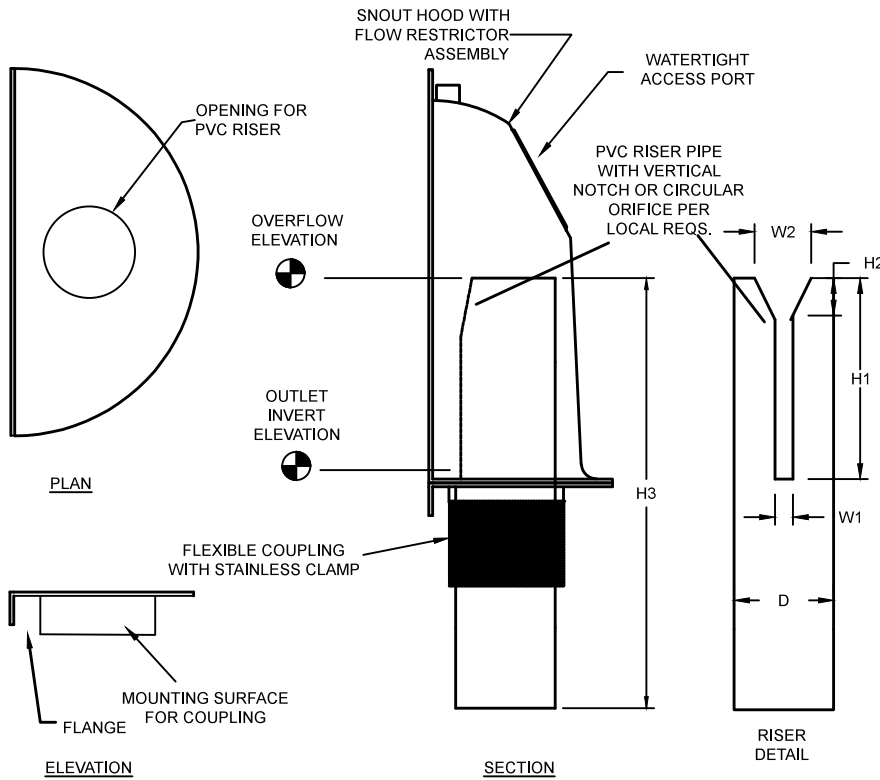
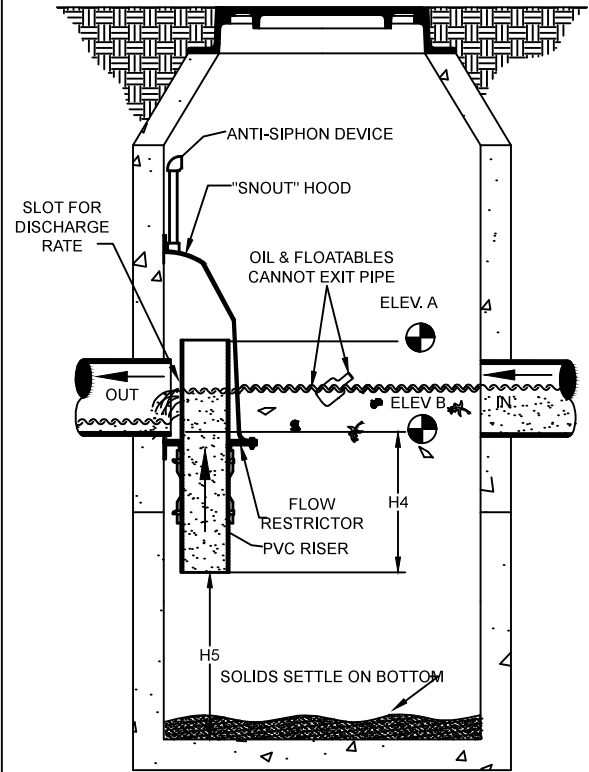


FLOW RESTRICTOR DETAIL



TYPICAL INSTALLATION



NOTES:

- ALL FLOW RESTRICTOR HOODS FOR CATCH BASINS AND WATER QUALITY STRUCTURES SHALL BE AS MANUFACTURED BY:
BEST MANAGEMENT PRODUCTS, INC.
9 MATHEWS DRIVE, UNIT A1-A2
EAST HADDAM, CT 06432
(800)504-8008 OR (888)434-0277, FAX (877)434-3197
WWW.BMPINC.COM
OR PRE-APPROVED EQUAL
- ALL FLOW RESTRICTOR HOODS SHALL BE CONSTRUCTED OF A GLASS REINFORCED RESIN COMPOSITE WITH ISO GEL COAT EXTERIOR FINISH WITH A MINIMUM 0.125" LAMINATE THICKNESS.
- ALL FLOW RESTRICTOR HOODS SHALL BE EQUIPPED WITH A WATERTIGHT ACCESS PORT, A MOUNTING FLANGE, AND AN ANTI-SIPHON VENT AS DRAWN.
- THE SIZE AND CONFIGURATION OF THE DISCHARGE SLOT SHALL IN THE PVC RISER* SHALL BE DETERMINED BY LOCAL REQUIREMENTS.
- THE PVC RISER SHALL BE SECURED TO FLOW RESTRICTOR PLATE WITH A FLEXIBLE PIPE COUPLING WITH STAINLESS STEEL CLAMPS.
- THE ANTI-SIPHON VENT SHALL EXTEND ABOVE FLOW RESTRICTOR HOOD BY A MINIMUM OF 12" AND A MAXIMUM OF 24" ACCORDING TO STRUCTURE CONFIGURATION.
- THE SURFACE OF THE STRUCTURE WHERE THE HOOD AND FLOW RESTRICTOR ARE MOUNTED SHALL BE FINISHED SMOOTH AND FREE OF LOOSE MATERIAL.
- THE FLOW RESTRICTOR HOOD SHALL BE SECURELY ATTACHED TO STRUCTURE WALL WITH 3/8" STAINLESS STEEL BOLTS AND SEALED TO WALL WITH OIL-RESISTANT GASKET AS SUPPLIED BY MANUFACTURER.
- INSTALLATION INSTRUCTIONS SHALL BE FURNISHED WITH MANUFACTURER SUPPLIED INSTALLATION KIT.
INSTALLATION KIT SHALL INCLUDE:
 - INSTALLATION INSTRUCTIONS
 - PVC ANTI-SIPHON VENT PIPE AND ADAPTER
 - FLEXIBLE PIPE COUPLING FOR SDR 35 PVC WITH STAINLESS CLAMPS
 - OIL-RESISTANT CRUSHED CELL FOAM GASKET WITH PSA BACKING
 - 3/8" STAINLESS STEEL MOUNTING BOLTS
 - STAINLESS STEEL BOLTS AND LOCK NUTS TO SECURE PLATE TO HOOD
 - ANCHOR SHIELDS

*PVC RISER PIPE SHALL BE SDR 35, AND MAY BE PURCHASED SEPARATELY AND CUT PER LOCAL REQUIREMENTS.

DIMENSION REQUIREMENTS

- ELEVATION A: _____ (OVERFLOW)
- ELEVATION B: _____ (OUTLET INVERT)

RISER DIMENSIONS

- D= RISER ID: _____
- W1= SLOT WIDTH*: _____
- W2= NOTCH WIDTH*: _____
- H1= SLOT LENGTH*: _____
- H2= NOTCH LENGTH*: _____
- H3= RISER LENGTH: _____
- H4= SUBMERGE DEPTH: _____ (MIN. 18")
- H5= DEPTH TO BOTTOM: _____ (MIN. 24")

*CAN SUBSTITUTE WITH CIRCULAR ORIFICE

HOOD SIZE DETERMINED BY MANUFACTURER BASED ON RISER DIAMETER.

ADDITIONAL SKIRT PIECES AVAILABLE TO INCREASE HEIGHT OF HOOD.

US PATENT# 6126817

FLOW RESTRICTOR SPECIFICATION FOR CATCH BASINS AND WATER QUALITY STRUCTURES

DESCRIPTION	DATE	SCALE
FLOW RESTRICTOR SPECIFICATION AND INSTALLATION (TYPICAL)	09/25/18	NONE
DRAWING NUMBER		
SP-FR		